

Fl.

Vln. I

Vln. II

Vla.

Vc.

DB

11 12 13 14 15 16 17

Fl.

Vln. I

Vln. II

Vla.

Vc.

DB

18 19 20 21 22 23

ff

ff

ff

ff

ff

Fl.

24 25 26 27 28 29 30

Vln. I

Vln. II

Vla.

Vc.

DB

arco

f



Fl.

31 32 33 34 35 36 37

Vln. I

Vln. II

Vla.

Vc.

DB

Fl. *p*

38 39 40 41 42

Vln. I *p*

Vln. II *p*

Vla. *p*

Vc. *p*

DB

Fl. *f*

43 44 45 46 47 48 49

Vln. I *f* *ff* *fp* stac.

Vln. II *f* *ff* *fp* stac.

Vla. *f* *ff* *fp* stac.

Vc. *f* *ff* *fp* stac.

DB arco *f* *ff*

Fl.

50 51 52 53 54 55 56

Vln. I

Vln. II

Vla.

Vc.

DB

Fl.

57 58 59 60 61 62

Vln. I

Vln. II

Vla.

Vc.

DB

ff

Fl.

63 64 65 66 67 68 69 70

Vln. I

Vln. II

Vla.

Vc.

DB

Fl.

71 72 73 74 75 76

Vln. I

Vln. II

Vla.

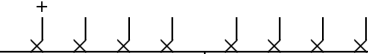
Vc.

DB

Drumset

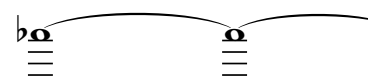
HH

Perc.



p

Fl.



77

78

79

80

81

82

Vln. I

Vln. II

Vla.

Vc.

DB



Perc.

ff

SD BD

p

roll flute inward

(exhale)

ts ts ts sim.

K

B

B

B

B

B

B

B

pp

p

ff

mf

83

84

85

86

87

88

89

90

Vln. I

pp

Vln. II

pp

Vla.

pp

Vc.

pp

DB

Perc. *ff* Toms *p* *ff* *p*

Fl. *ff* (exhale) *p* *ff* *mf*

roll flute inward

ts ts ts sim.

B K B B B B B B

91 92 93 94 95 96 97 98

Vln. I

Vln. II

Vla. *f* do not rush *mf*

Vc. *f* do not rush pizz. *mf* *f* *mf*

DB *ff* *ff*

Perc. *ff* *p* *ff* *p*

Fl. *ff* (exhale) *p* *ff* *mf*

roll flute inward

ts ts ts sim.

B B B B B B B

99 100 101 102 103 104 105 106

Vln. I *f* do not rush *mf*

Vln. II *f* do not rush *mf*

Vla. *f* *mf* *f* *mf*

Vc. *f* *mf* *f* *mf*

DB *ff* *ff*

in dialog with the flute
(until ms. 127)

Perc. *ff* *p* *ff* *f*

Fl. *ff* *f*

Vln. I *f* *mf* *f* *p*

Vln. II *f* *mf* *f* *p*

Vla. *f* *mf* *f* *p*

Vc. *f* *mf* *f* *p*

DB (pizz.) *ff* *f* *ff* *p*

Perc. *p*

Fl.

Vln. I *fp*

Vln. II *fp*

Vla. *fp*

Vc. *fp*

DB *f*

Perc. *f* *p* *f*

Fl. *f*

122 123 124 125 126 127

Vln. I *fp* *fp*

Vln. II *fp* *fp*

Vla. *fp* *fp*

Vc. *fp* *fp*

DB *f* *f*



Perc. *f*

Fl. *f*

128 129 130 131 132

Vln. I *fp* *fp* *fp* *f*

Vln. II *fp* *fp* *fp* *f*

Vla. *fp* *fp* *fp* *f*

Vc. *fp* *fp* *fp* *f*

DB *f*

Tri. HH

Perc.

mf *p*

Toms

Fl.

p

133 134 135 136 137 138

Vln. I

p

Vln. II

p

Vla.

p

Vc.

p

DB

p

Perc.

BD

Fl.

p

139 140 141 142 143

Vln. I

pp

Vln. II

pp

Vla.

pp

Vc.

pp

DB

p

Perc. *mf*

Fl. *f_{sub.}*

144 145 146 147 148 149

Vln. I

Vln. II

Vla.

Vc.

DB

Perc. *p*

Fl. *mf* *p*

150 151 152 153 154

Vln. I *p* *pp*

Vln. II *p* *pp*

Vla. *p* *pp*

Vc. *p* *pp*

DB

Perc. to Marimba

Fl.

Vln. I

Vln. II

Vla.

Vc.

DB

155 156 157 158 159 160 161

arco

pp

Meno mosso (♩ = 132, ♩ = 66)

Fl.

Meno mosso (♩ = 132, ♩ = 66)

162 163 164 165 166 167 168 169 170 171 172

Vln. I

Vln. II

Vla.

Vc.

DB

p